

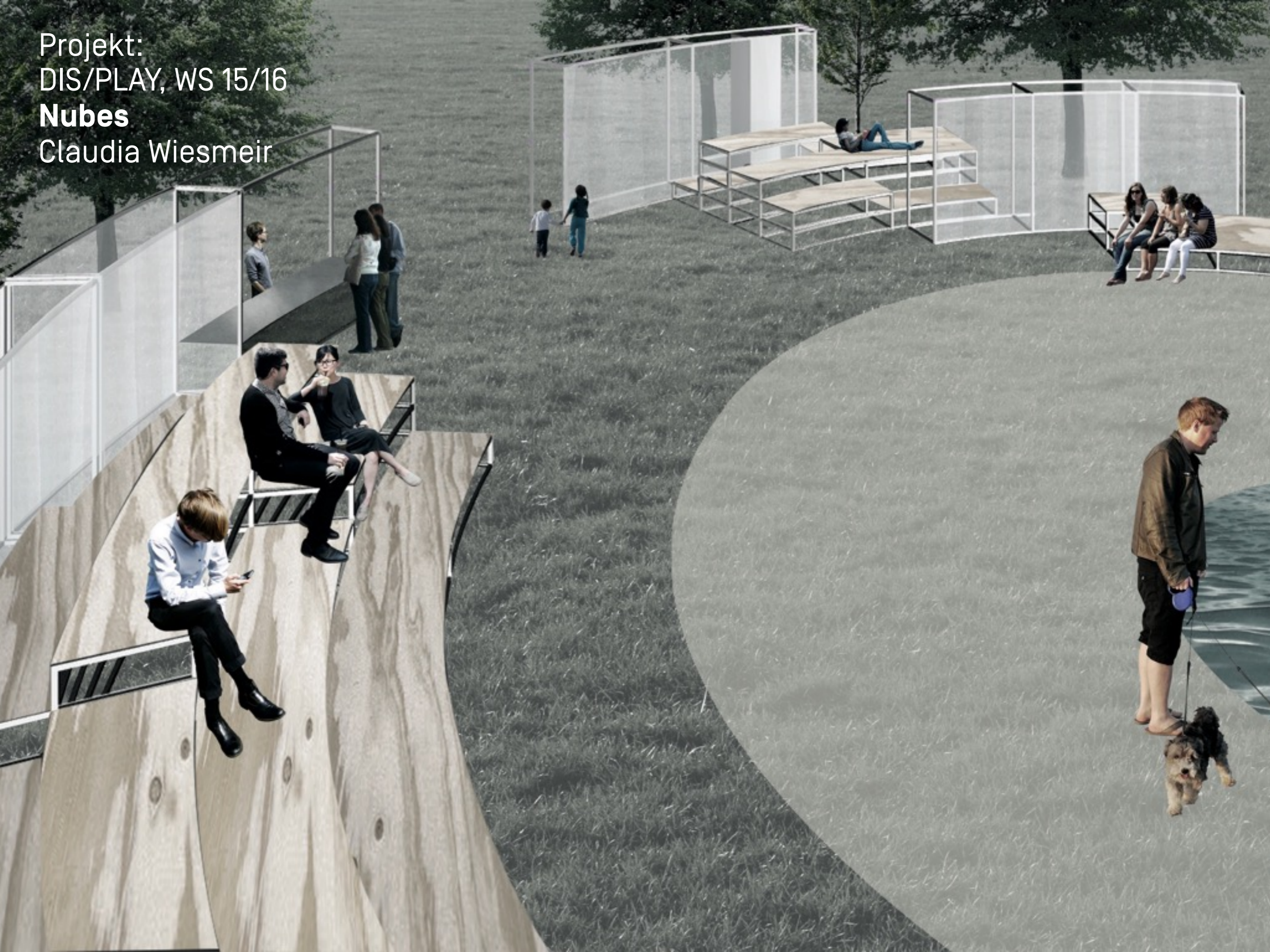
Masterstudium  
**Raum and Informationsdesign**



WS '15-'16  
**DIS/PLAY**  
in Public Space



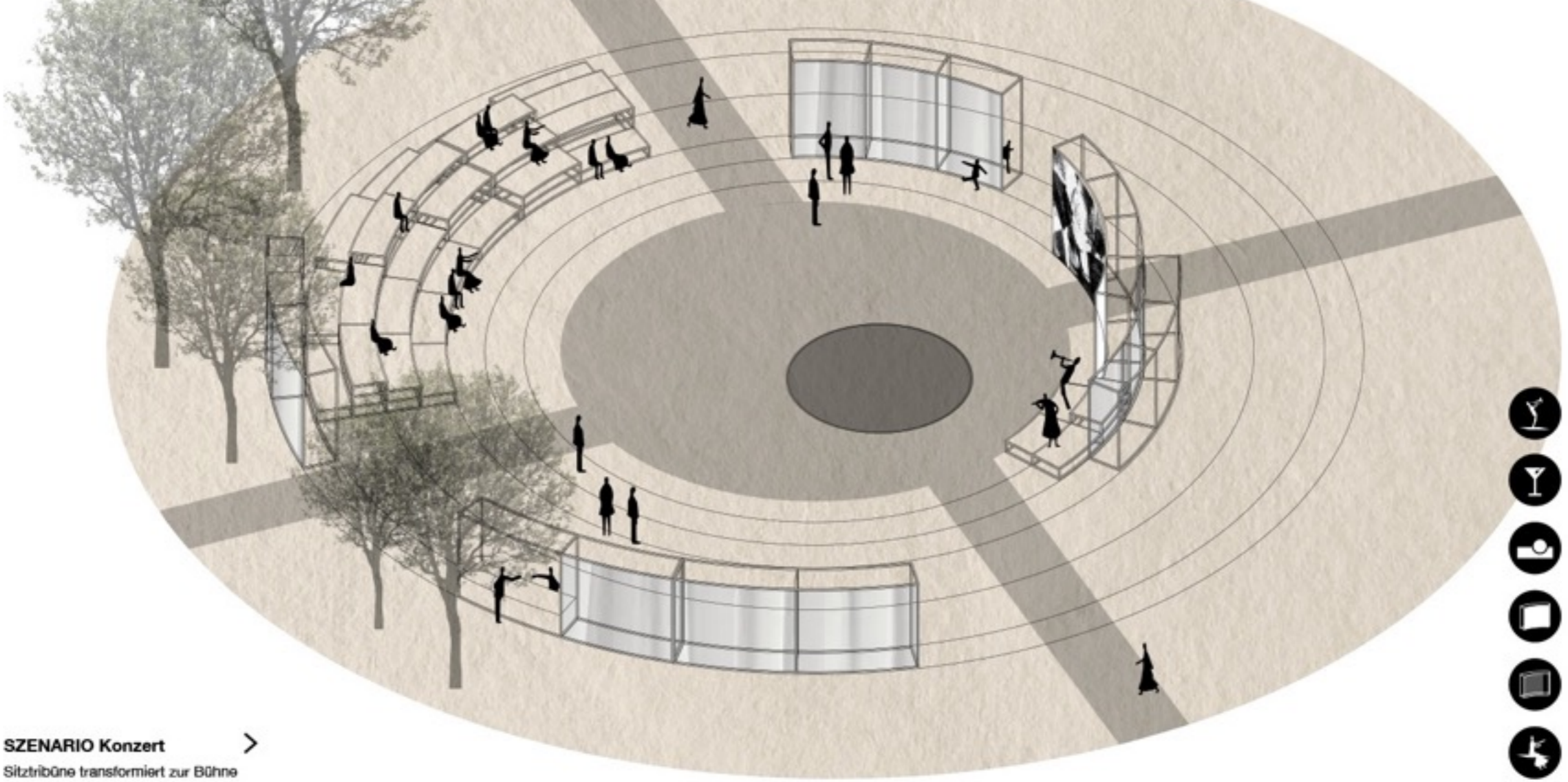
Projekt:  
DIS/PLAY, WS 15/16  
**Nubes**  
Claudia Wiesmeir



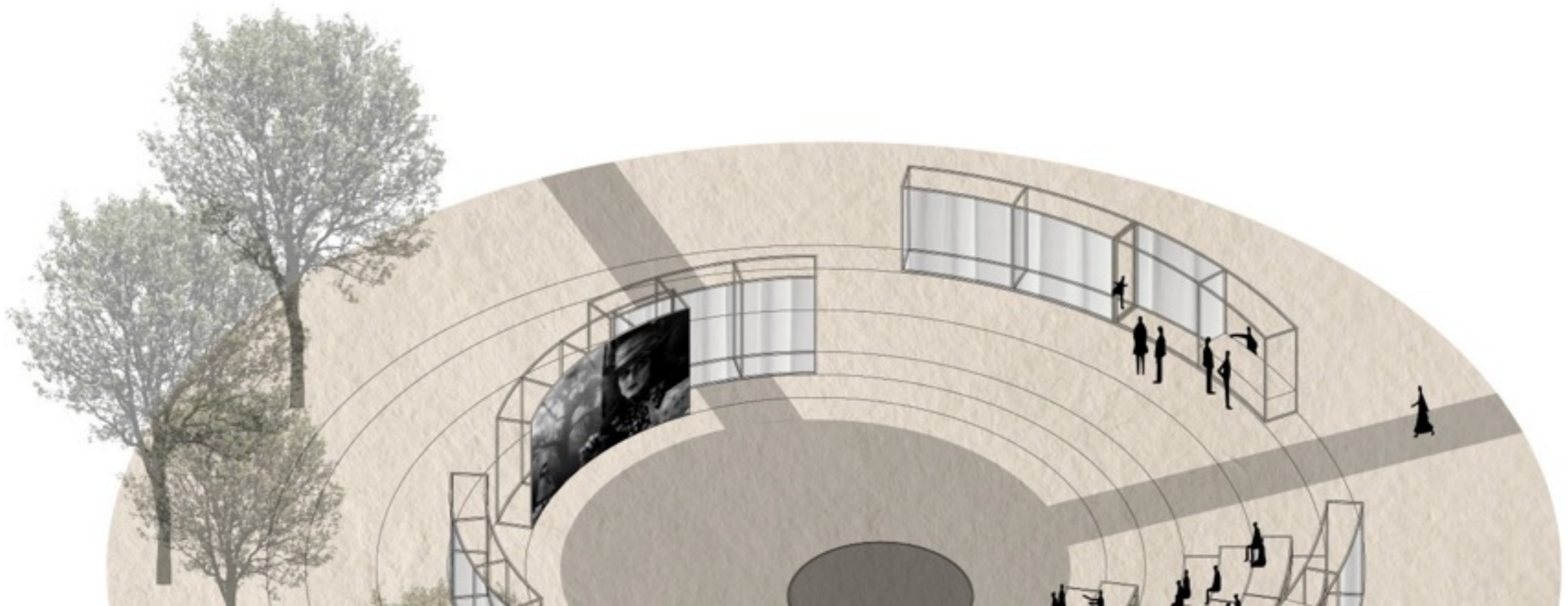








**SZENARIO Konzert** >  
Sitztribüne transformiert zur Bühne





Projekt:

DIS/PLAY, WS 15/16

**Perspektive Nordbahnhof**

Eva Maria Frey



**PERSPEKTIVE  
NORDBAHNHOF**

Projekt:  
DIS/PLAY, WS 15/16  
**Perspektive Nordbahnhof**  
Eva Maria Frey





Projekt:

DIS/PLAY, WS 15/16

**Perspektive Nordbahnhof**

Eva Maria Frey





Projekt:

DIS/PLAY, WS 15/16

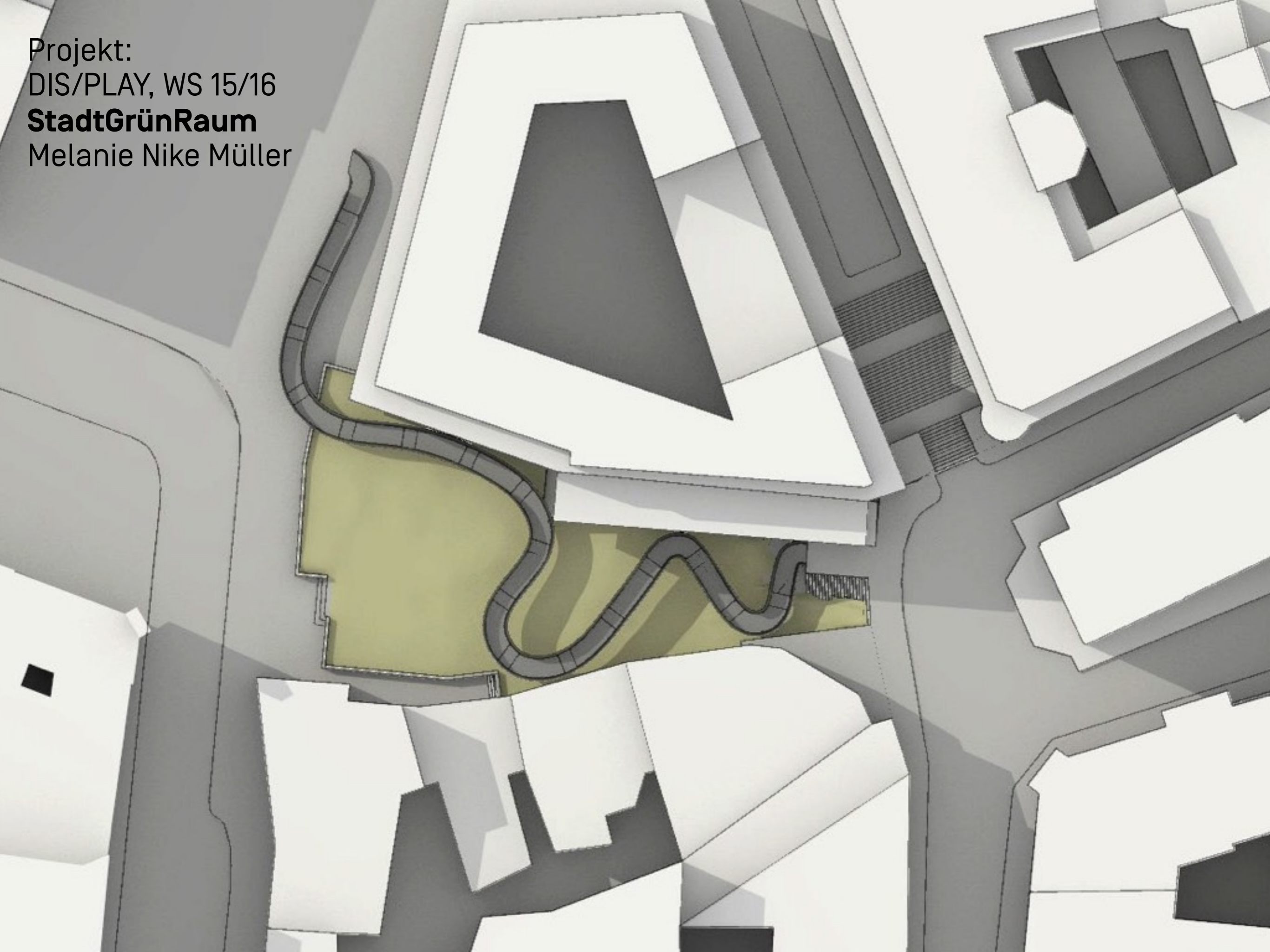
**Perspektive Nordbahnhof**

Eva Maria Frey



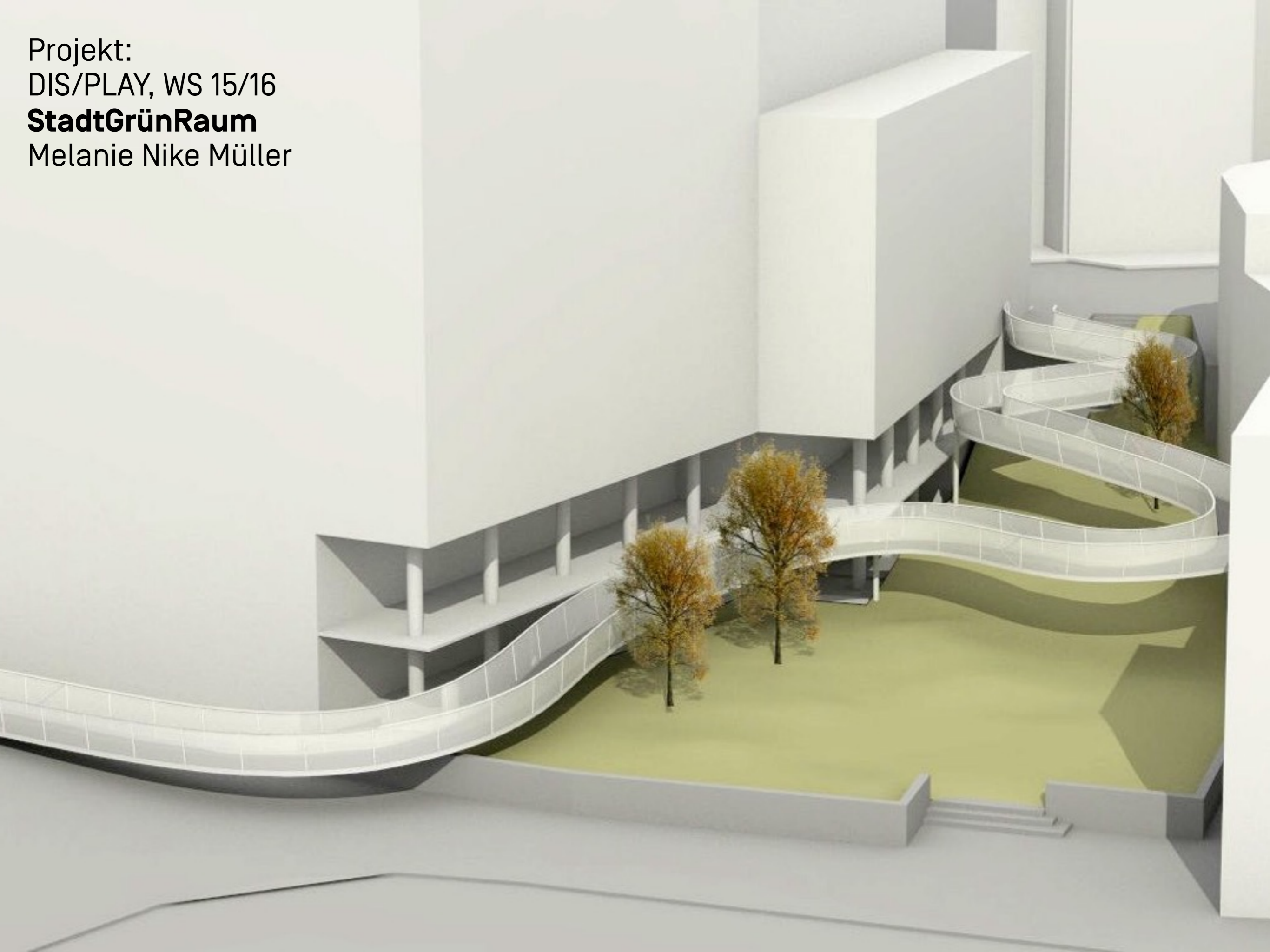


Projekt:  
DIS/PLAY, WS 15/16  
**StadtGrünRaum**  
Melanie Nike Müller





Projekt:  
DIS/PLAY, WS 15/16  
**StadtGrünRaum**  
Melanie Nike Müller

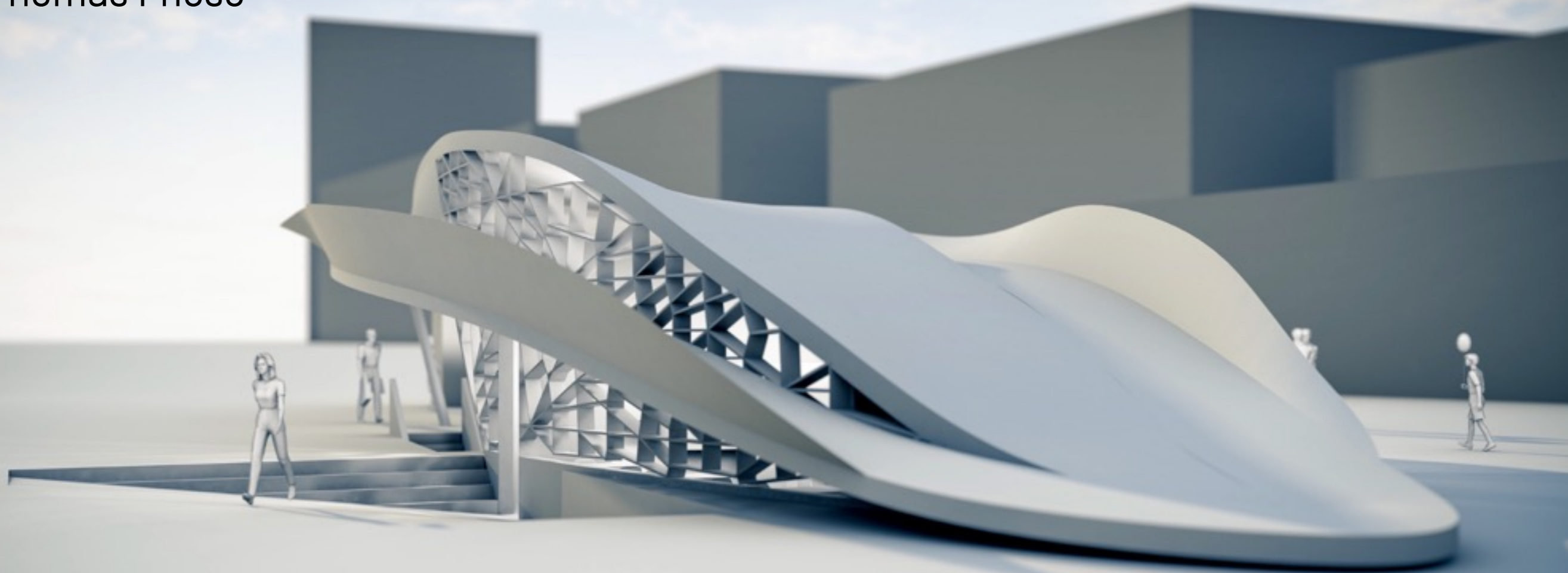






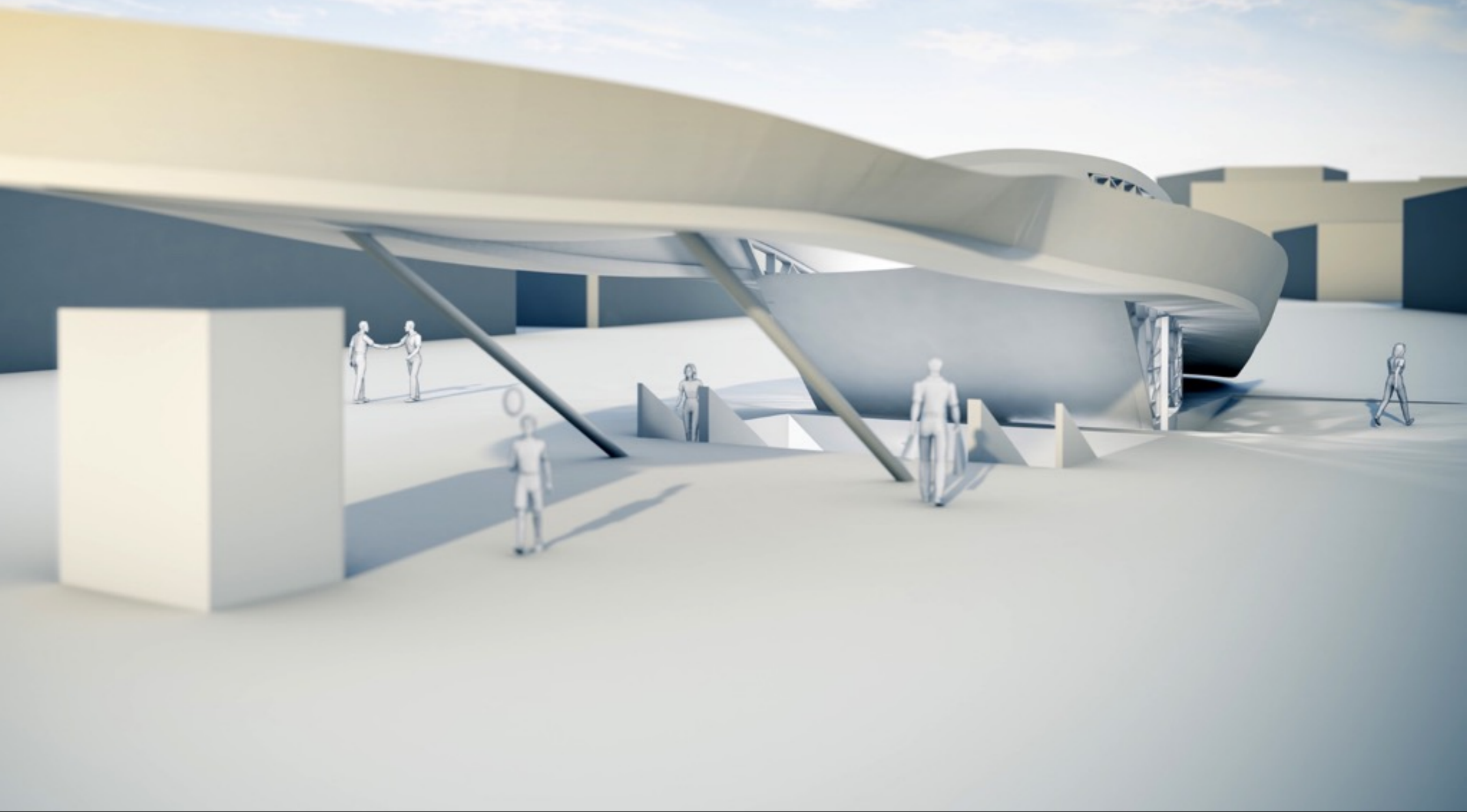


Projekt:  
DIS/PLAY, WS 15/16  
**U-Bahn-Ausgang**  
Thomas Friese



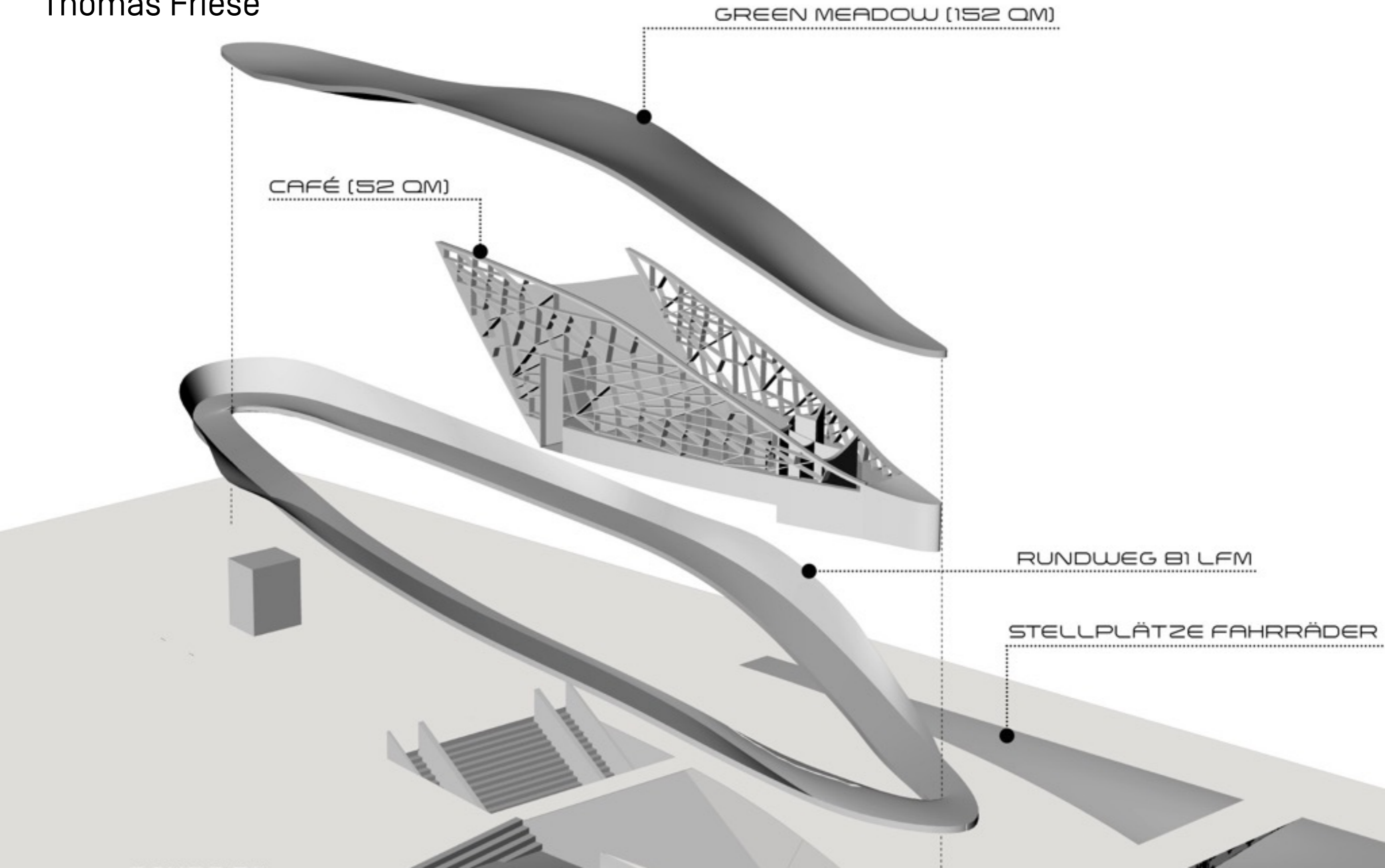


Projekt:  
DIS/PLAY, WS 15/16  
**U-Bahn-Ausgang**  
Thomas Friese



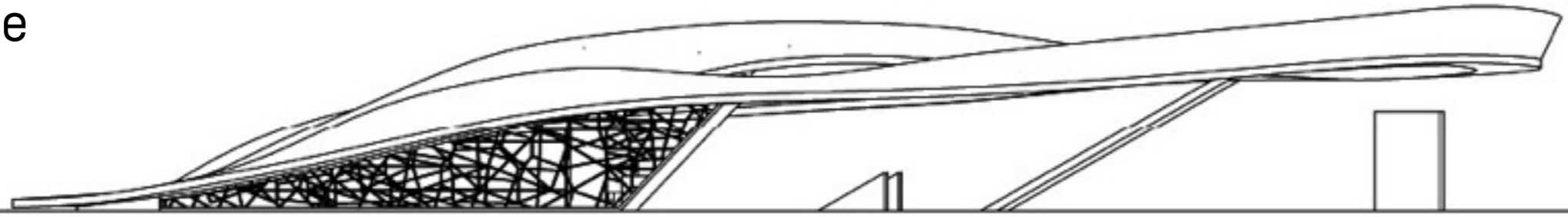


Projekt:  
DIS/PLAY, WS 15/16  
**U-Bahn-Ausgang**  
Thomas Friese

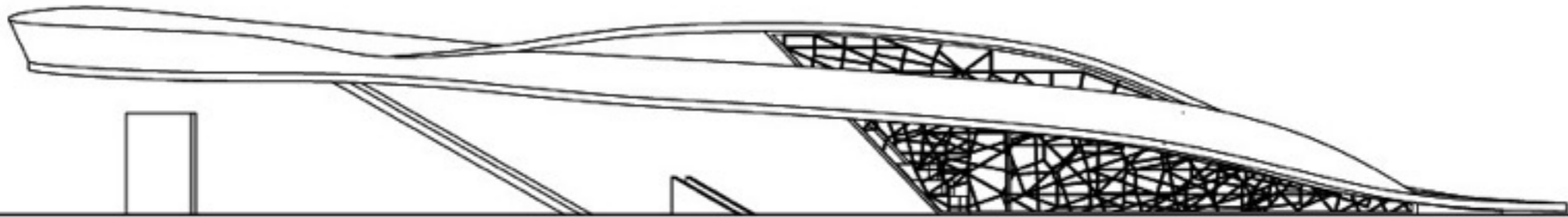




Projekt:  
DIS/PLAY, WS 15/16  
**U-Bahn-Ausgang**  
Thomas Friese



● ANSICHT M 1 : 100



● ANSICHT M 1 : 100

